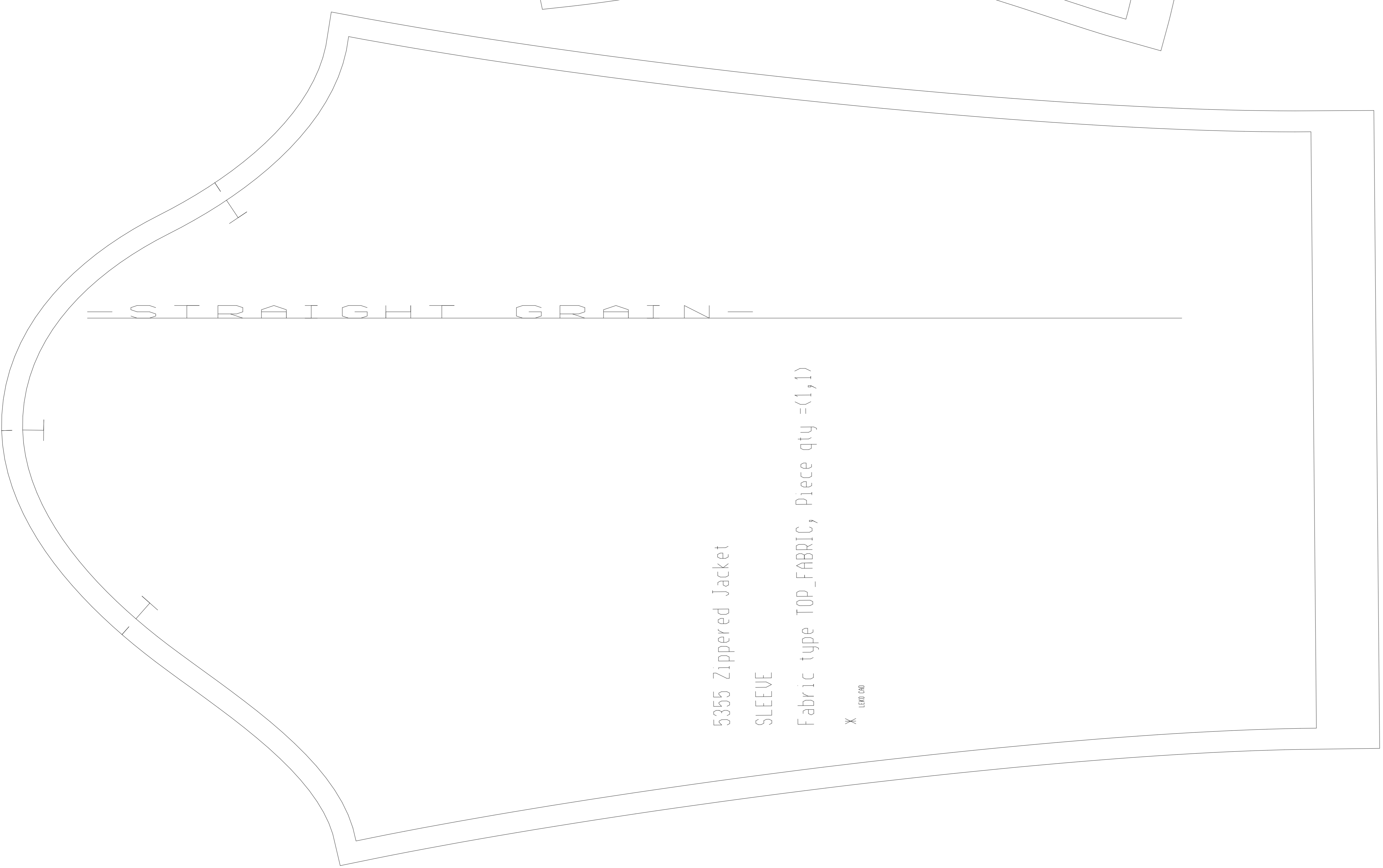


5355 Zippered Jacket  
BACK\_PART  
Fabric type TOP\_FABRIC, Piece qty =(1,0)

X 100.00



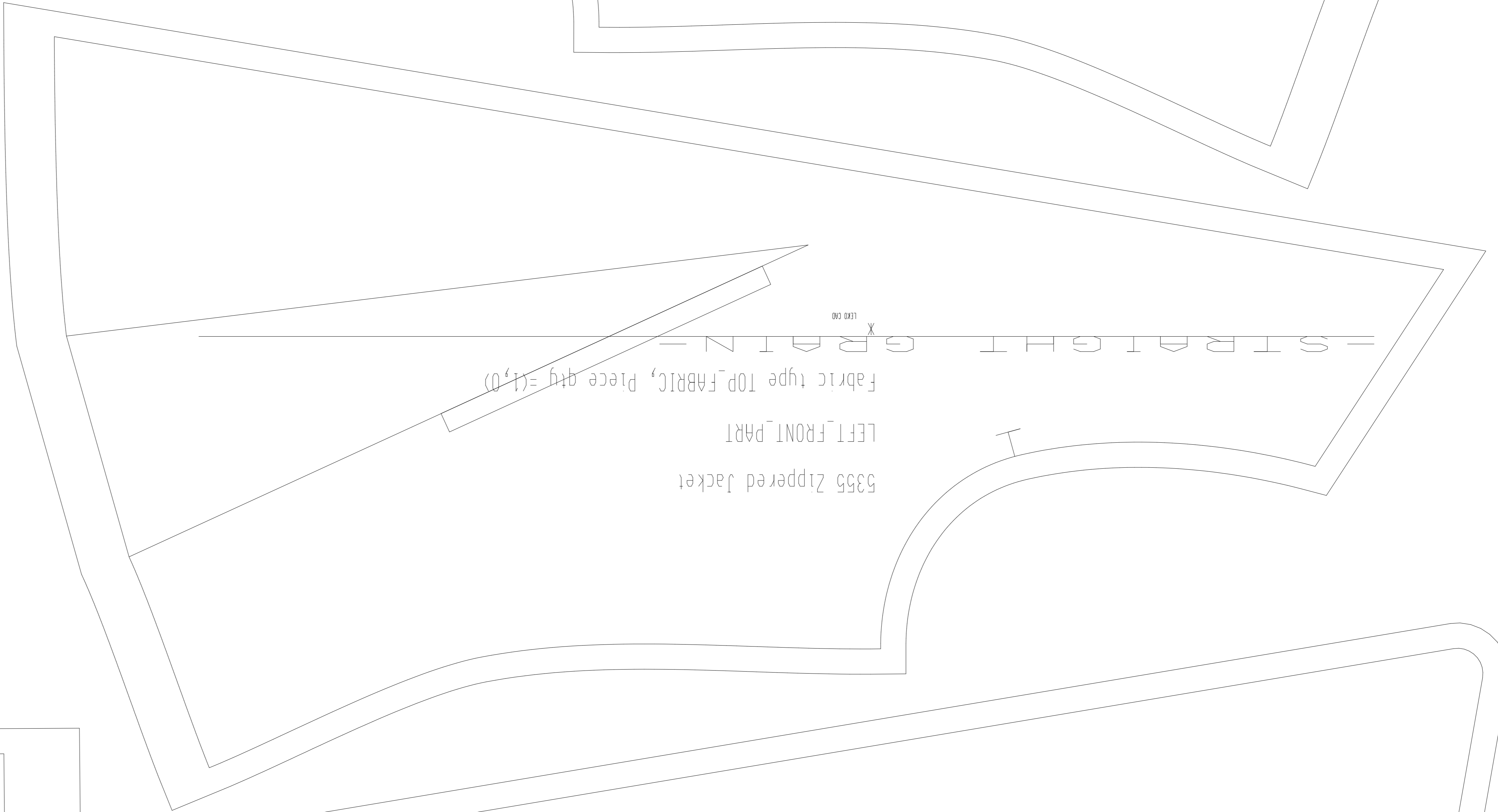
5355 Zippered Jacket  
SLEEVE  
Fabric type TOP\_FABRIC, Piece qty =(1,1)

X 100.00



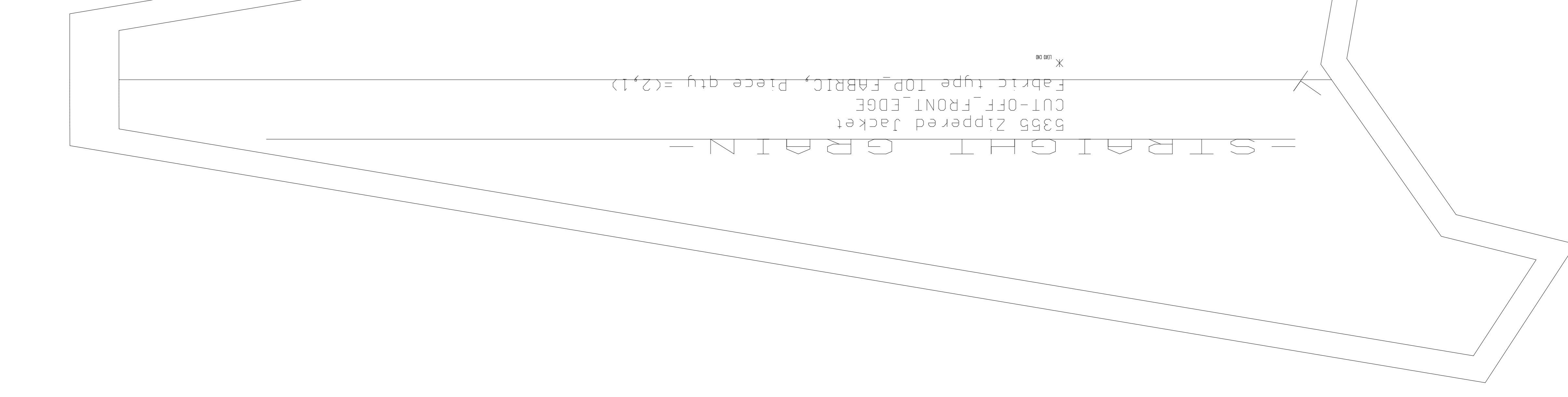
5355 Zippered Jacket  
RIGHT\_FRONT\_PART  
Fabric type TOP\_FABRIC, Piece qty =(1,0)

X 100.00



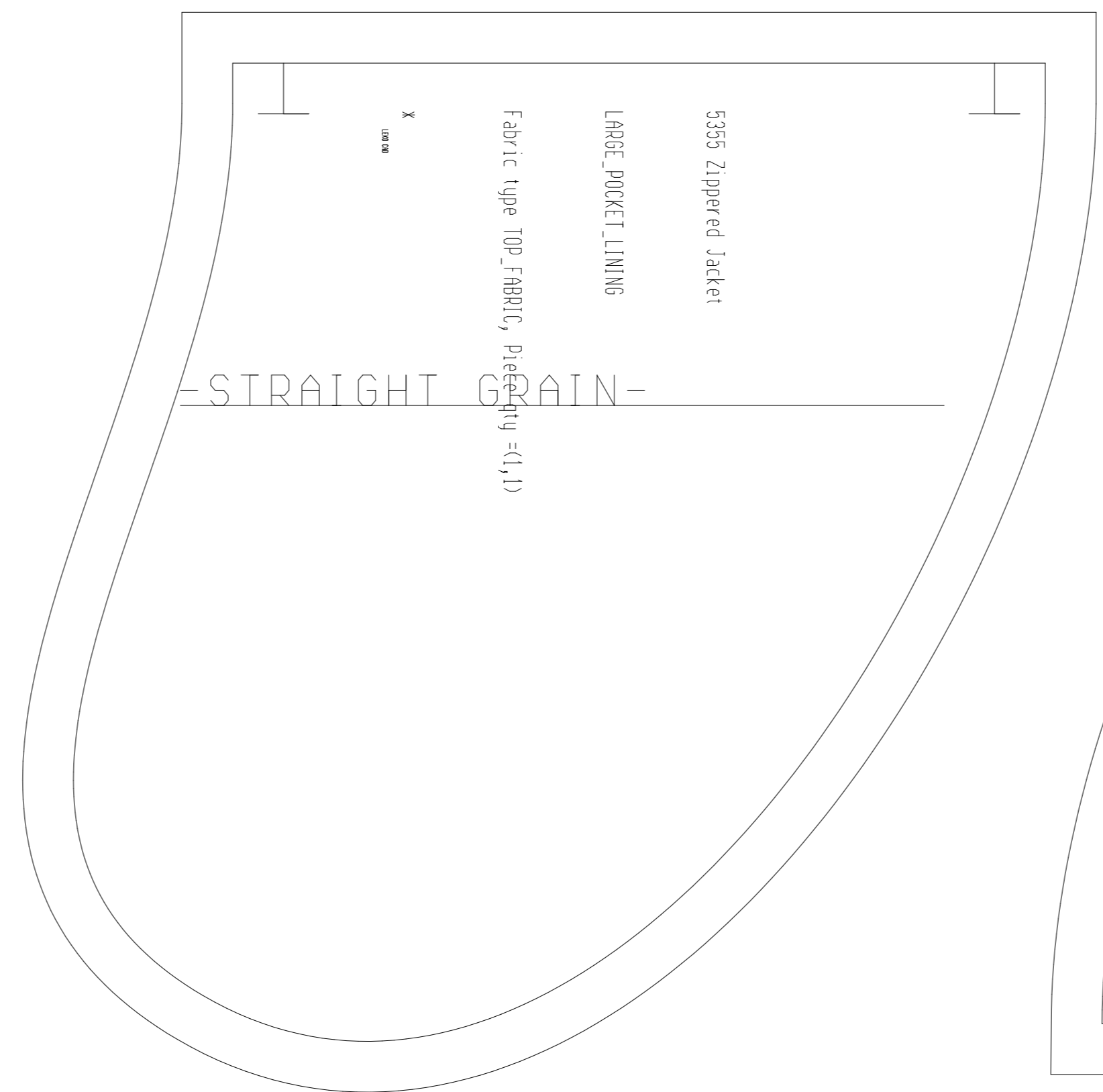
5355 Zippered Jacket  
LEFT\_FRONT\_PART  
Fabric type TOP\_FABRIC, Piece qty =(1,0)

X 100.00



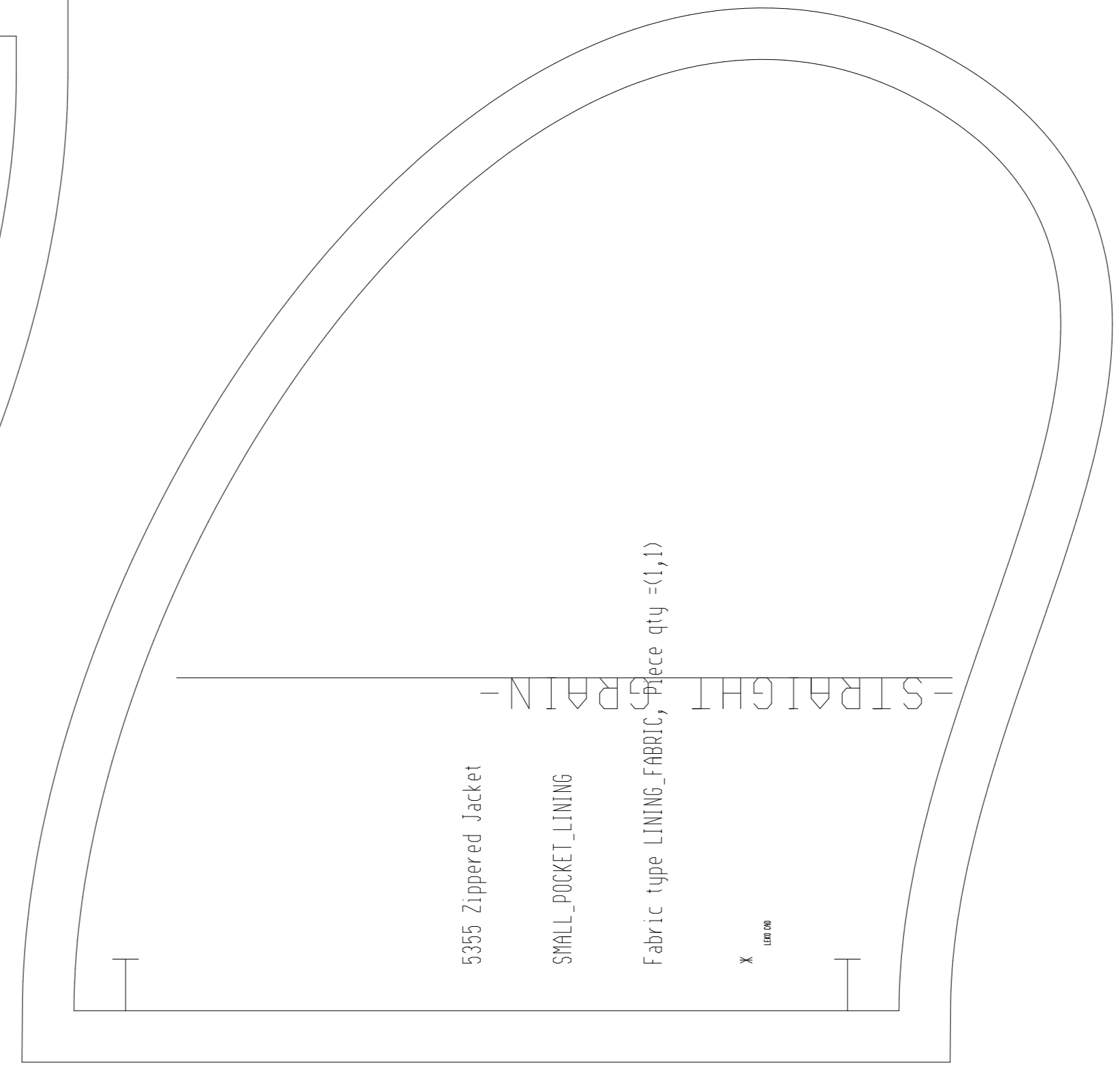
5355 Zippered Jacket  
CUT-OFF\_FRONT\_EDGE  
Fabric type TOP\_FABRIC, Piece qty =(2,1)

X 100.00



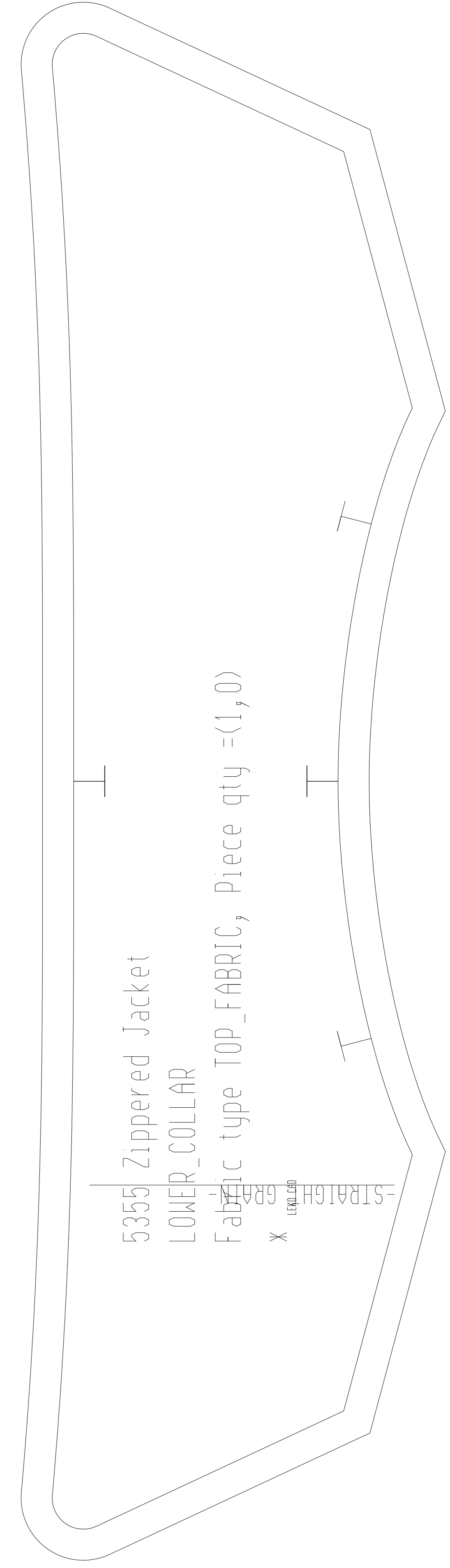
5355 Zippered Jacket  
SMALL\_POCKET\_LINING  
Fabric type LINING\_FABRIC, Piece qty =(1,1)

X 100.00



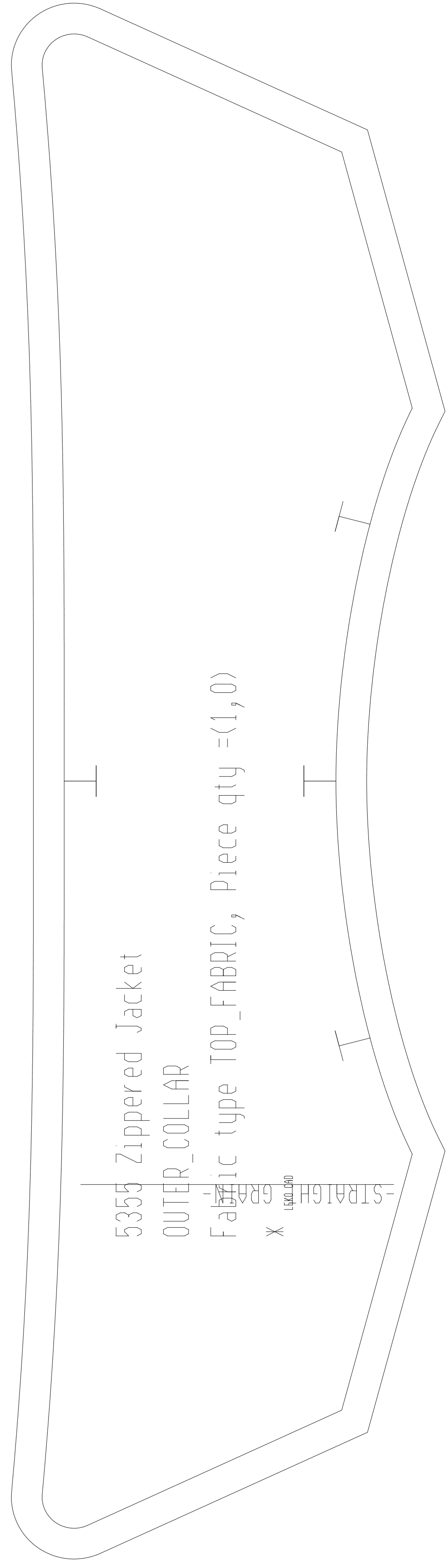
5355 Zippered Jacket  
SMALL\_POCKET\_LINING  
Fabric type LINING\_FABRIC, Piece qty =(1,1)

X 100.00



5355 Zippered Jacket  
LOWER\_COLLAR  
Fabric type TOP\_FABRIC, Piece qty =(1,0)

X 100.00



5355 Zippered Jacket  
OUTER\_COLLAR  
Fabric type TOP\_FABRIC, Piece qty =(1,0)

X 100.00