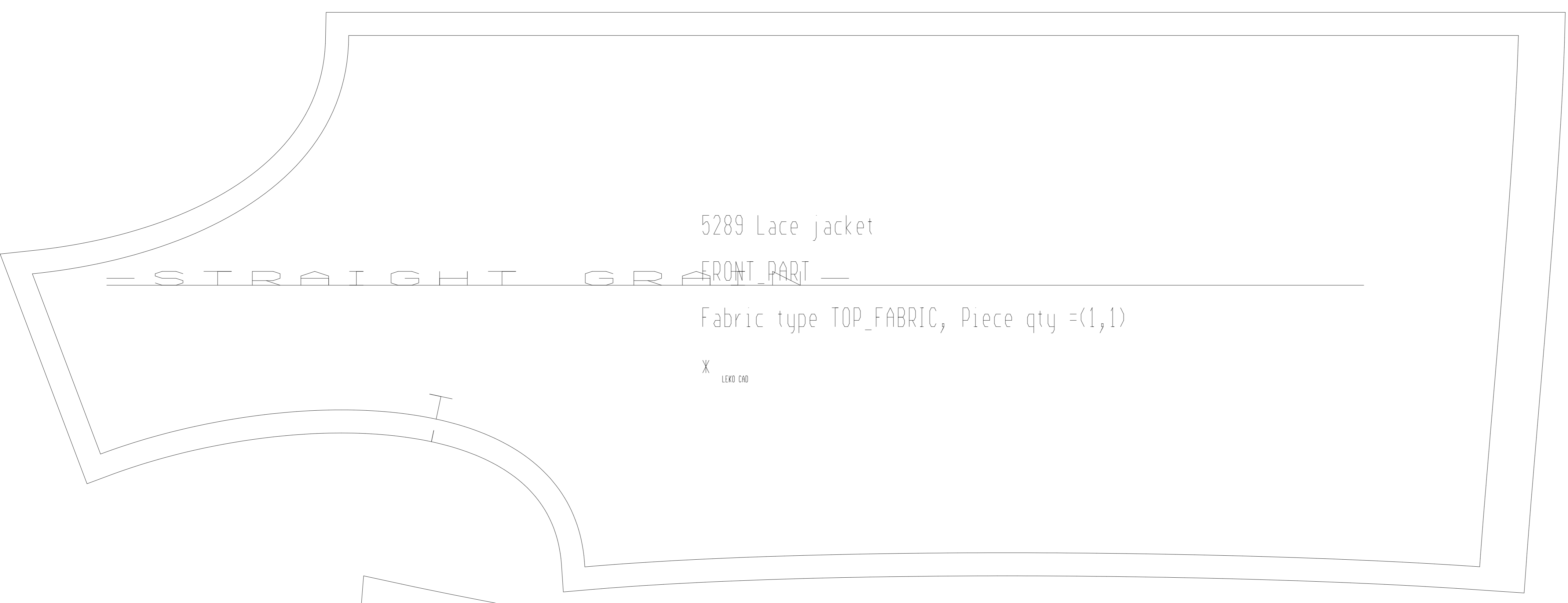




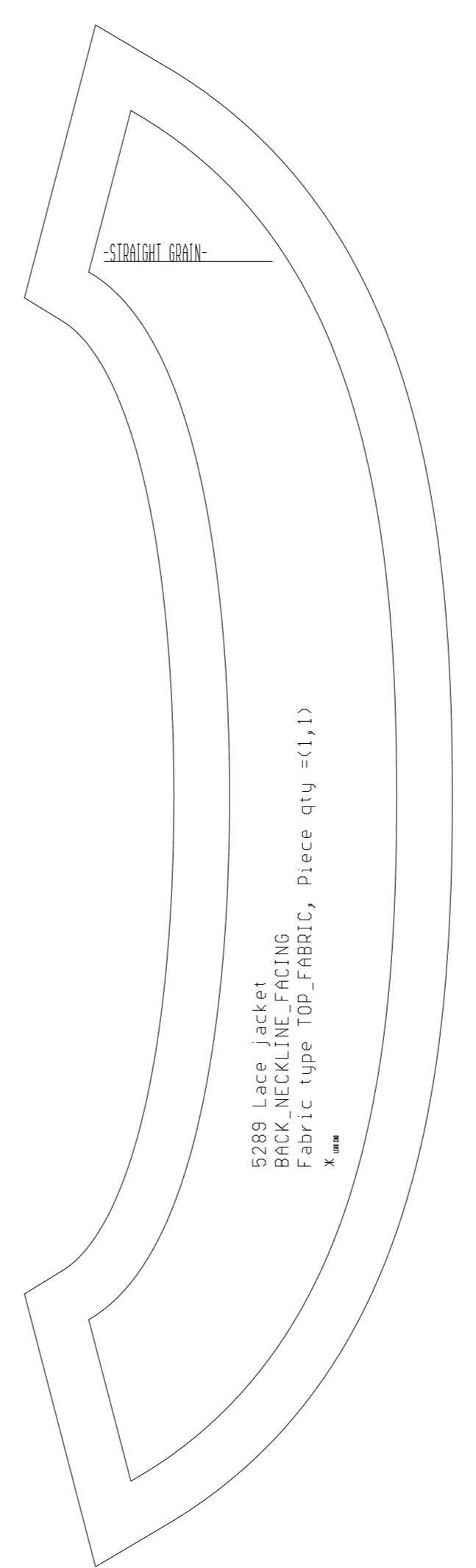
5289 Lace jacket  
BACK\_PART  
Fabric type TOP\_FABRIC, Piece qty =(1,0)  
X 100 00



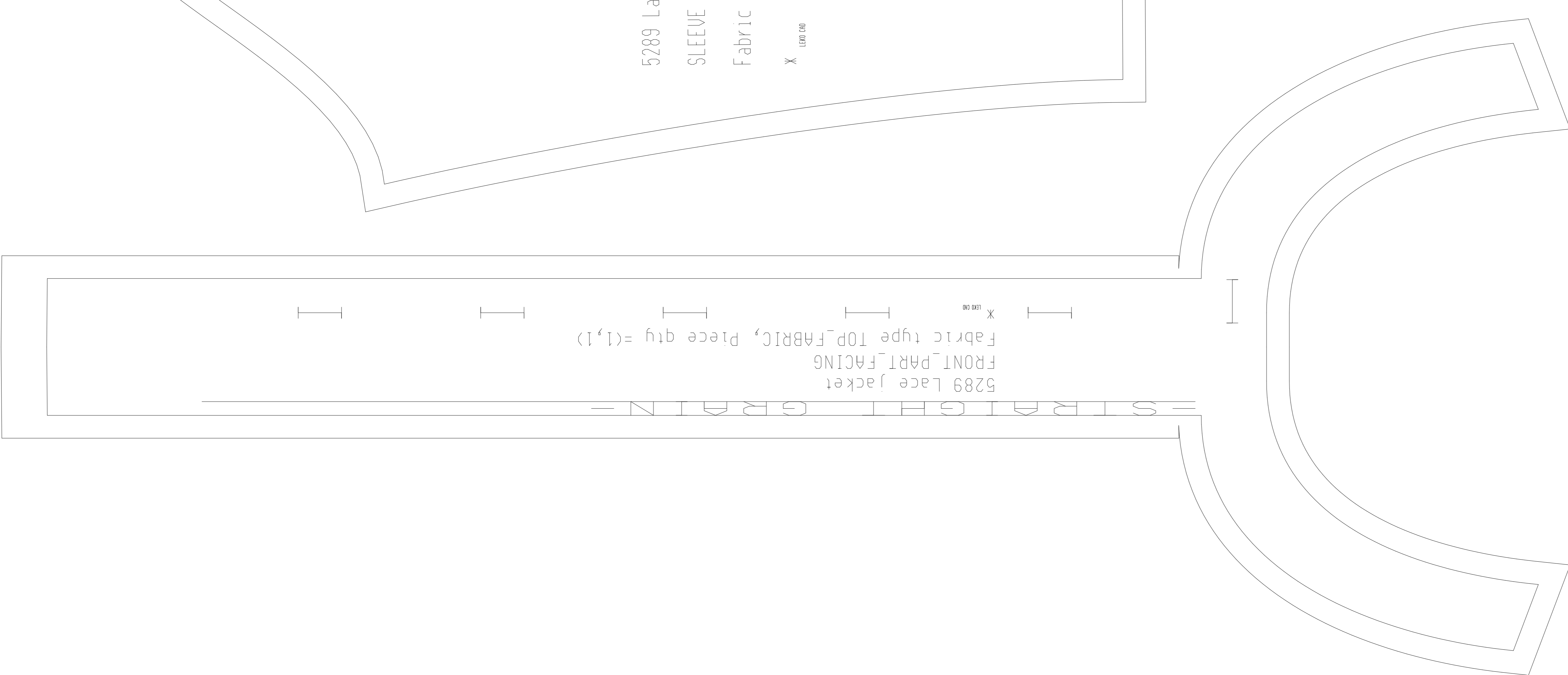
5289 Lace jacket  
FRONT\_PART  
Fabric type TOP\_FABRIC, Piece qty =(1,1)  
X 100 00



5289 Lace jacket  
SLEEVE  
Fabric type TOP\_FABRIC, Piece qty =(1,1)  
X 100 00



5289 Lace jacket  
CUFF  
Fabric type TOP\_FABRIC, Piece qty =(1,1)  
X 100 00



5289 Lace jacket  
FRONT\_PART\_FACING  
Fabric type TOP\_FABRIC, Piece qty =(1,1)  
X 100 00



5289 Lace jacket  
CUFF  
Fabric type TOP\_FABRIC, Piece qty =(1,1)  
X 100 00