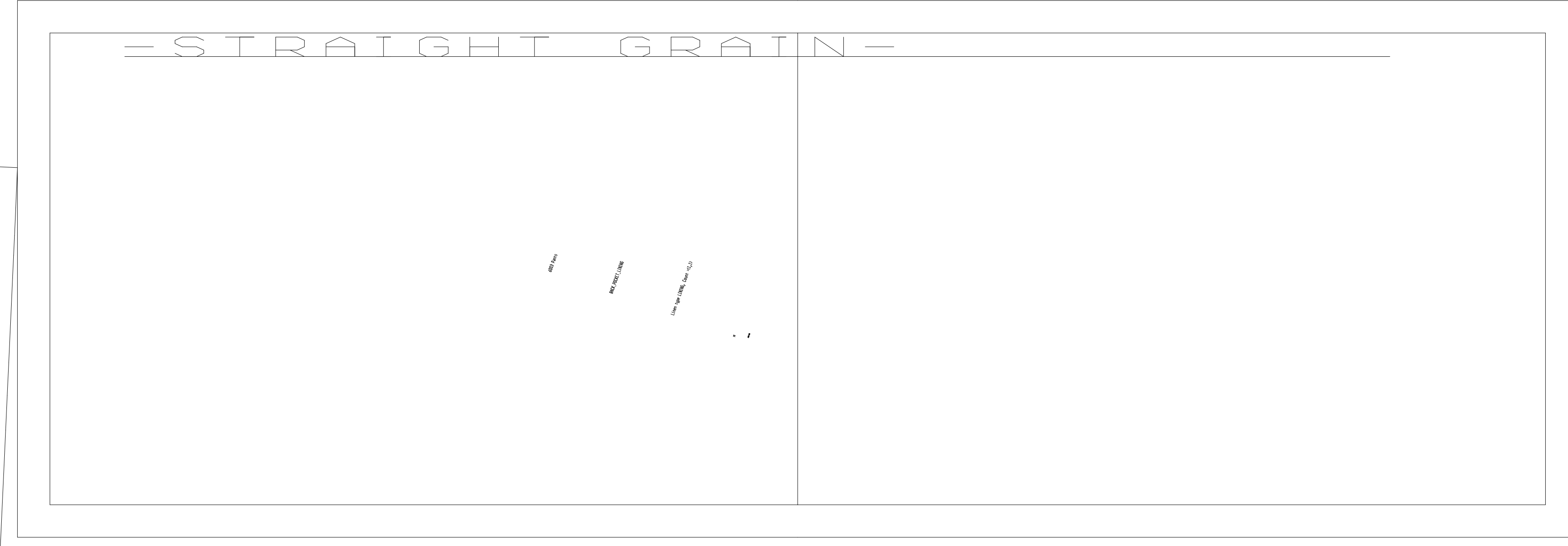


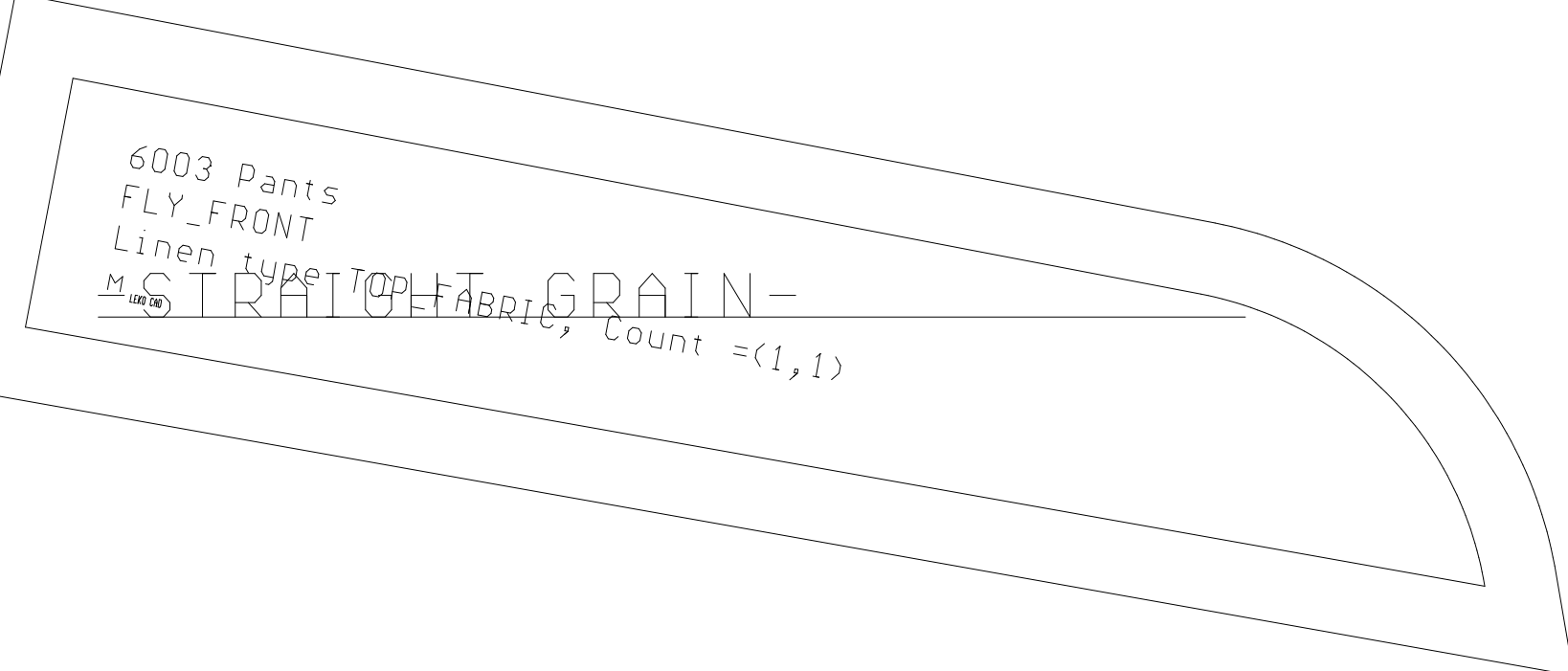


-STRAIGHT GRAIN-

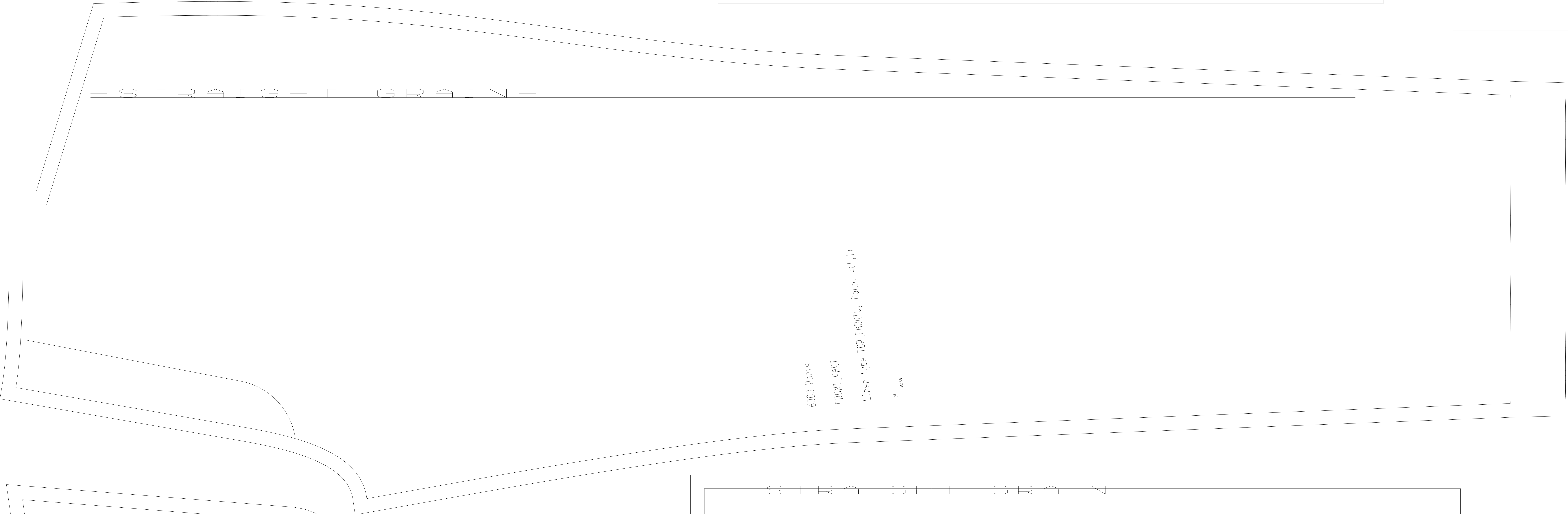
6003 Pants
BACK_PART
Linen type TOP_FABRIC, Count =(1,1)
M 100 00



-STRAIGHT GRAIN-

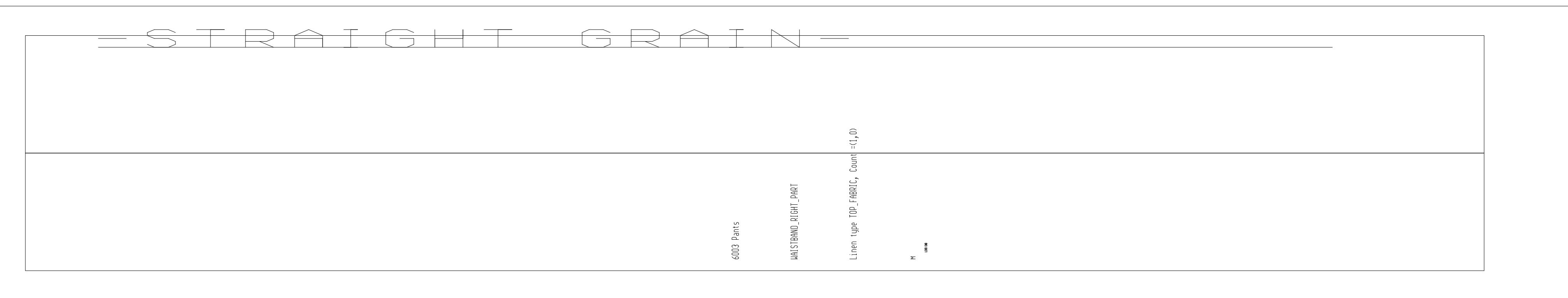


6003 Pants
FLY_FRONT
Linen type TOP_FABRIC, Count =(1,1)
M 100 00



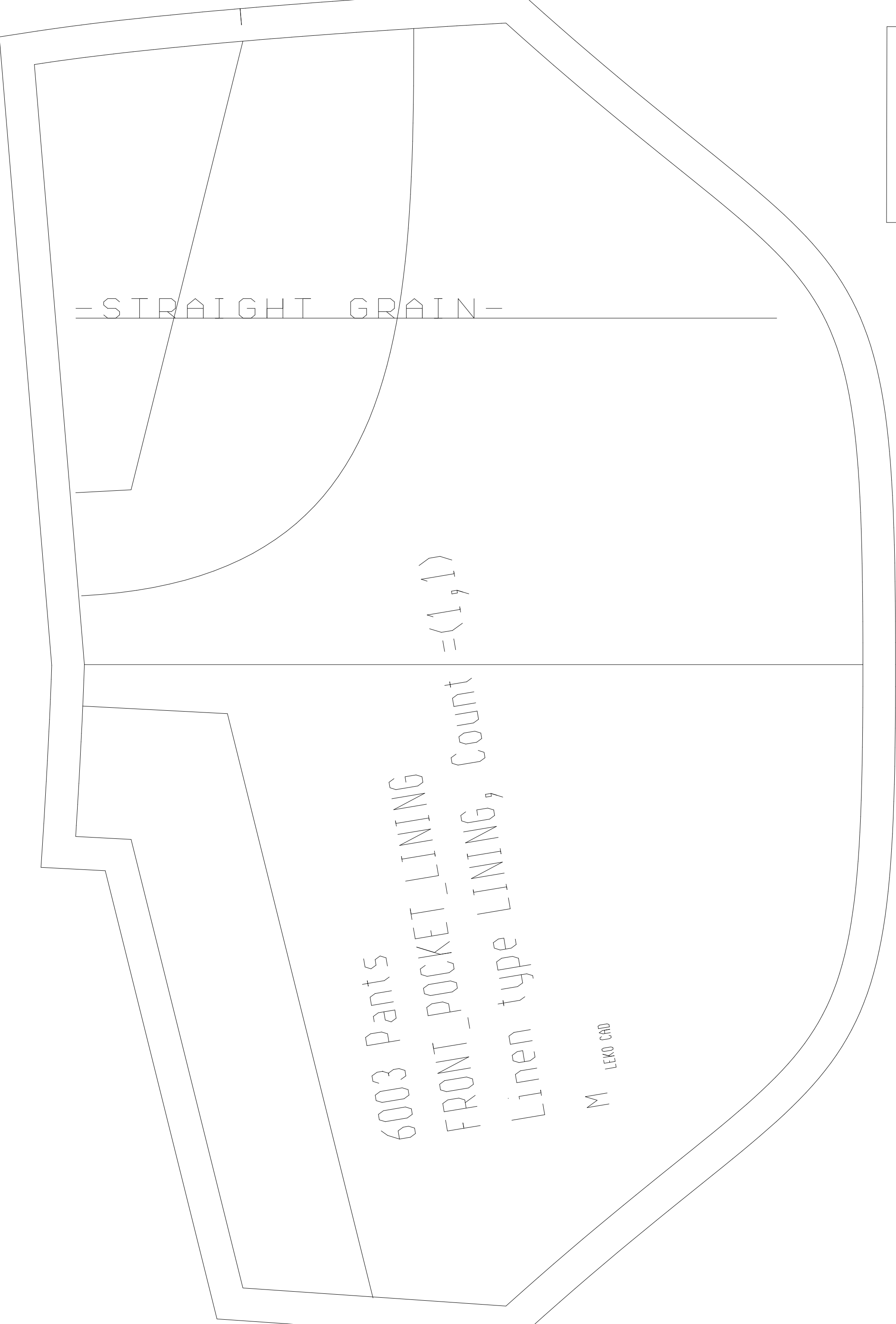
-STRAIGHT GRAIN-

6003 Pants
FRONT_PART
Linen type TOP_FABRIC, Count =(1,1)
M 100 00



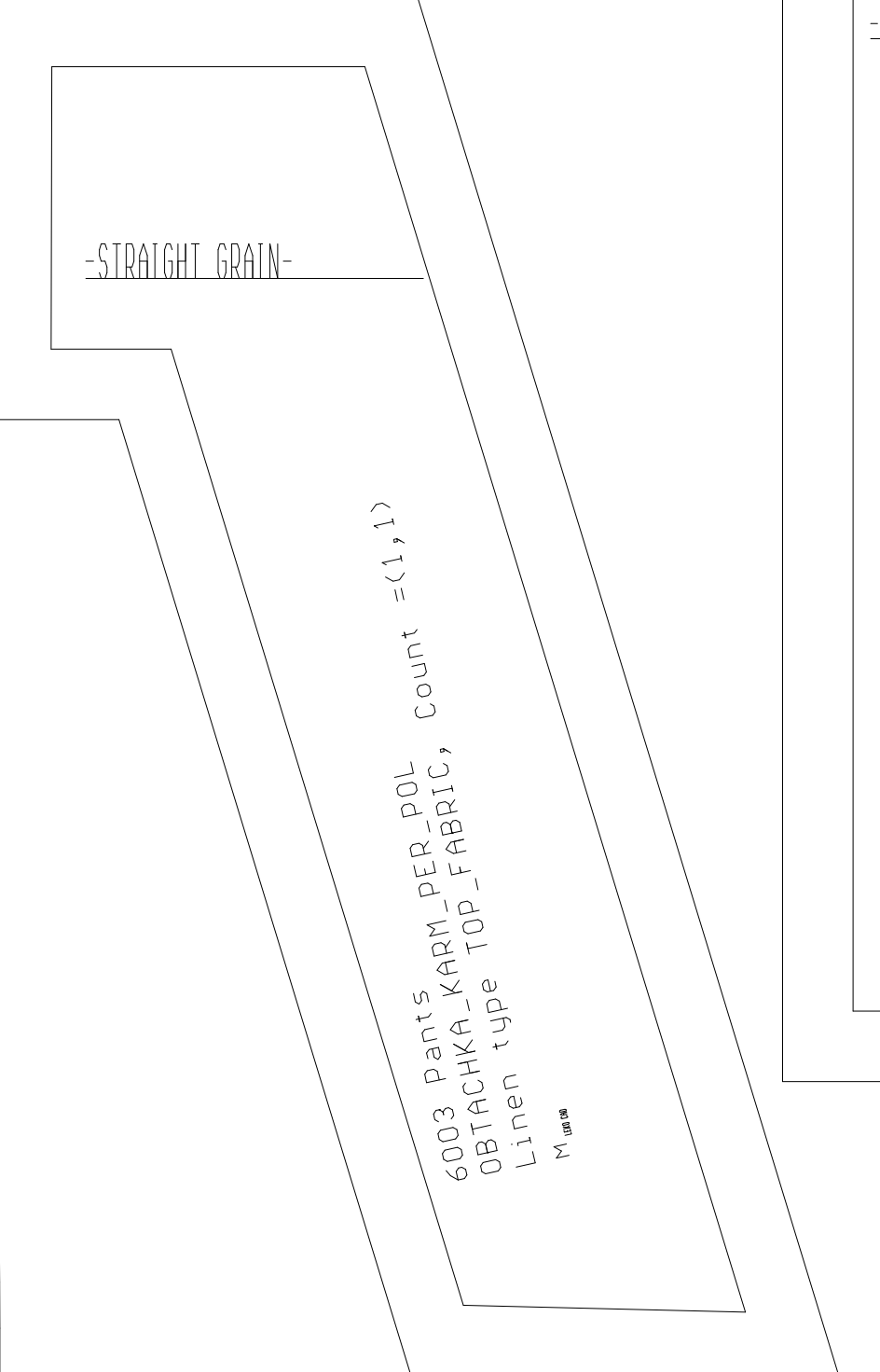
-STRAIGHT GRAIN-

6003 Pants
FRONT_PART
Linen type TOP_FABRIC, Count =(1,1)
M 100 00



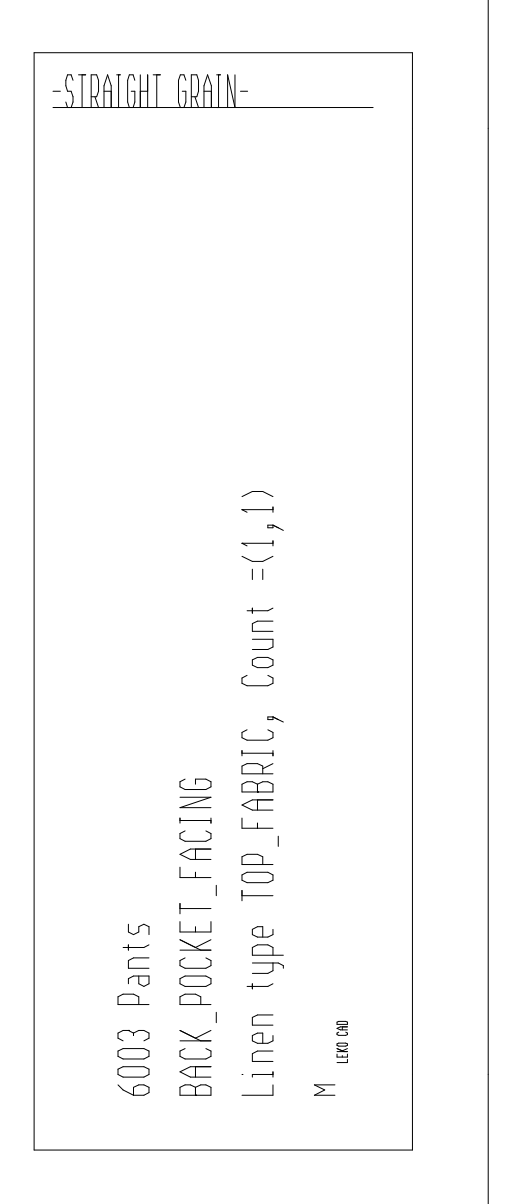
-STRAIGHT GRAIN-

6003 Pants
FRONT_POCKET_LINING
Linen type LINING, Count =(1,1)
M 100 00



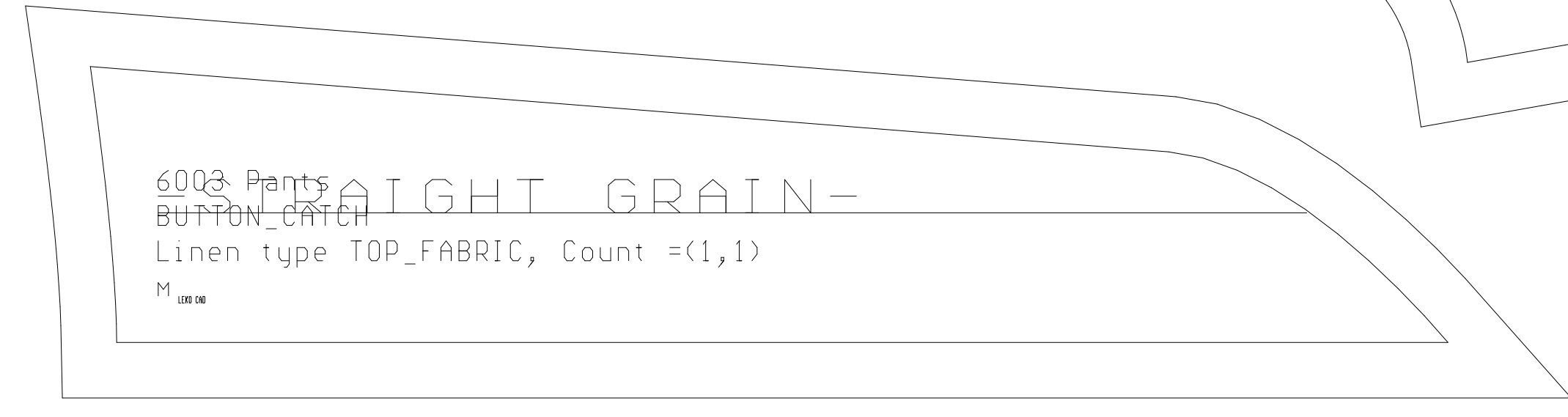
-STRAIGHT GRAIN-

6003 Pants
FRONT_POCKET
Linen type TOP_FABRIC, Count =(1,1)
M 100 00

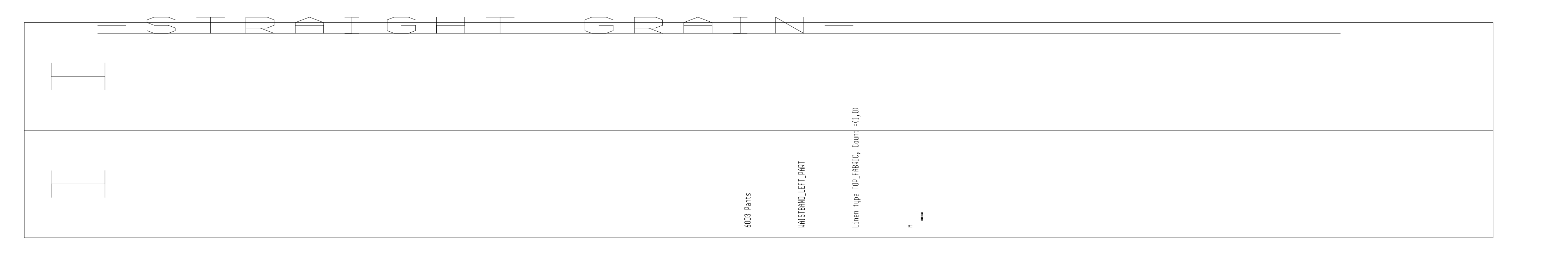


-STRAIGHT GRAIN-

6003 Pants
BACK_POCKET_FRACING
Linen type TOP_FABRIC, Count =(1,1)
M 100 00

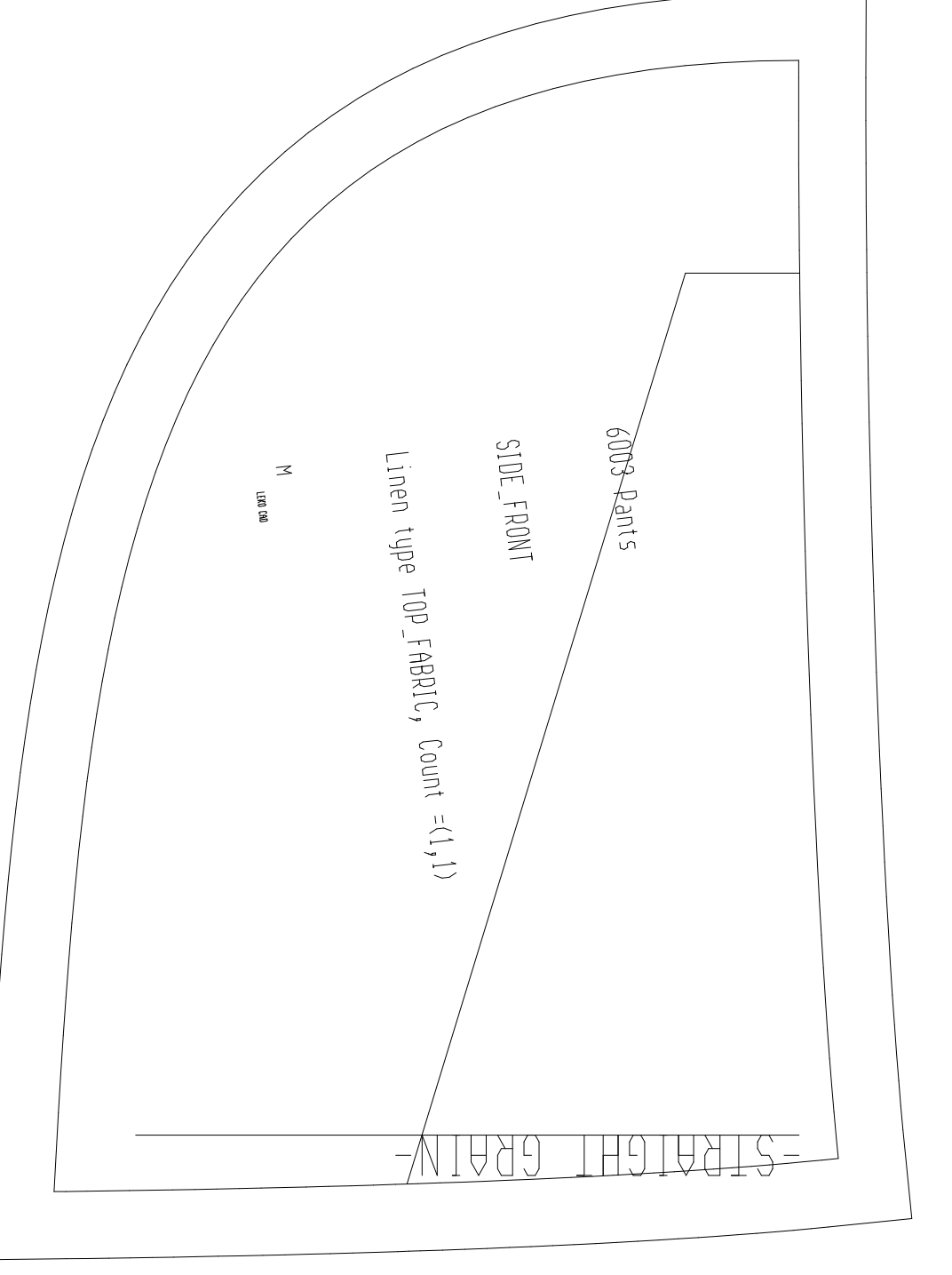


6003 Pants
BUTTON_CAPTURE
Linen type TOP_FABRIC, Count =(1,1)
M 100 00



-STRAIGHT GRAIN-

6003 Pants
FRONT_POCKET_LINING
Linen type LINING, Count =(1,1)
M 100 00



-STRAIGHT GRAIN-

6003 Pants
FRONT_POCKET_LINING
Linen type LINING, Count =(1,1)
M 100 00