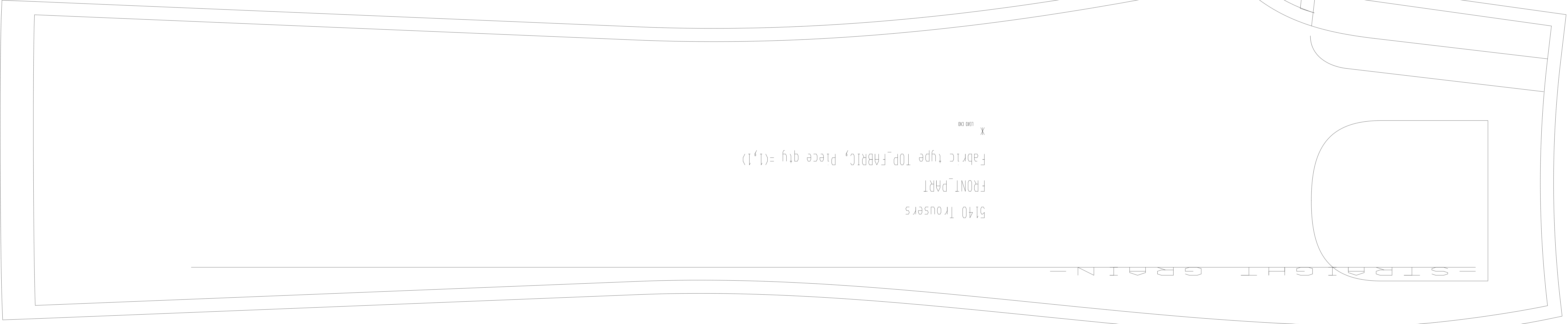


5140 Trousers

PART

Fabric type TOP_FABRIC, Piece qty=(1,1)

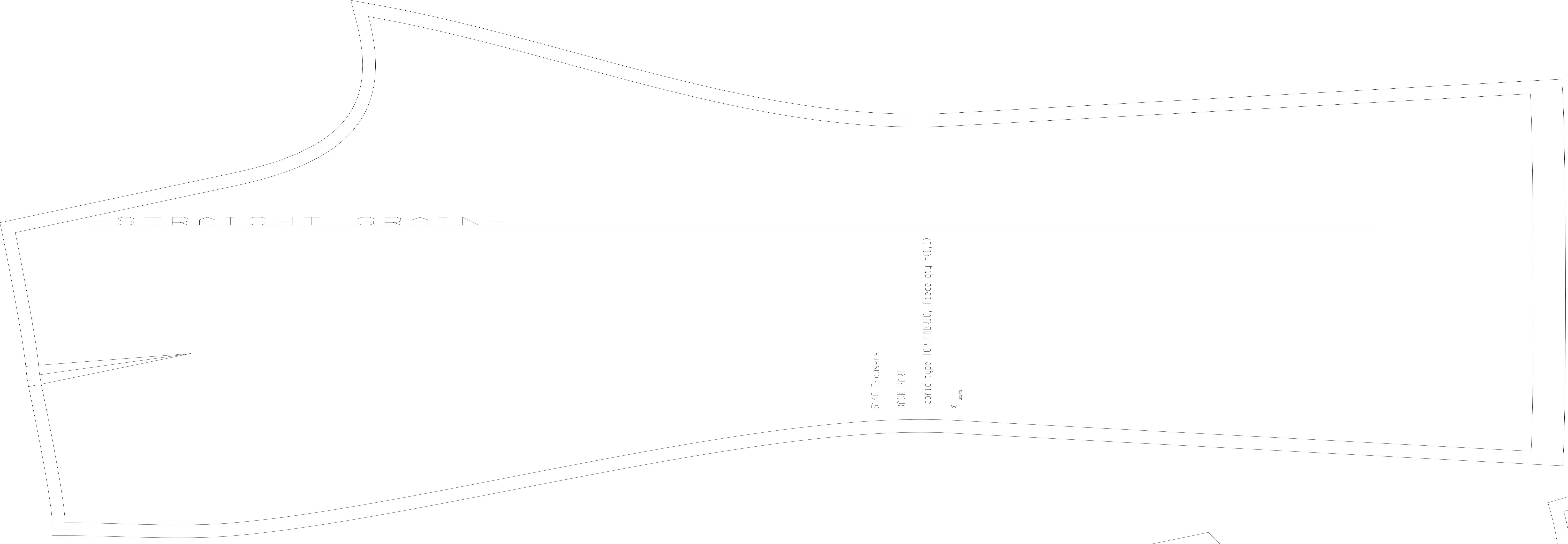


5140 Trousers

FRONT_PART

Fabric type TOP_FABRIC, Piece qty=(1,1)

X 1000

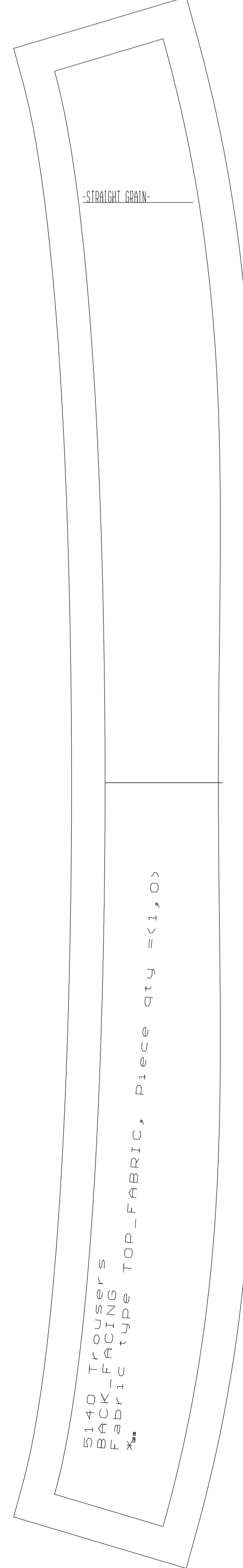


5140 Trousers

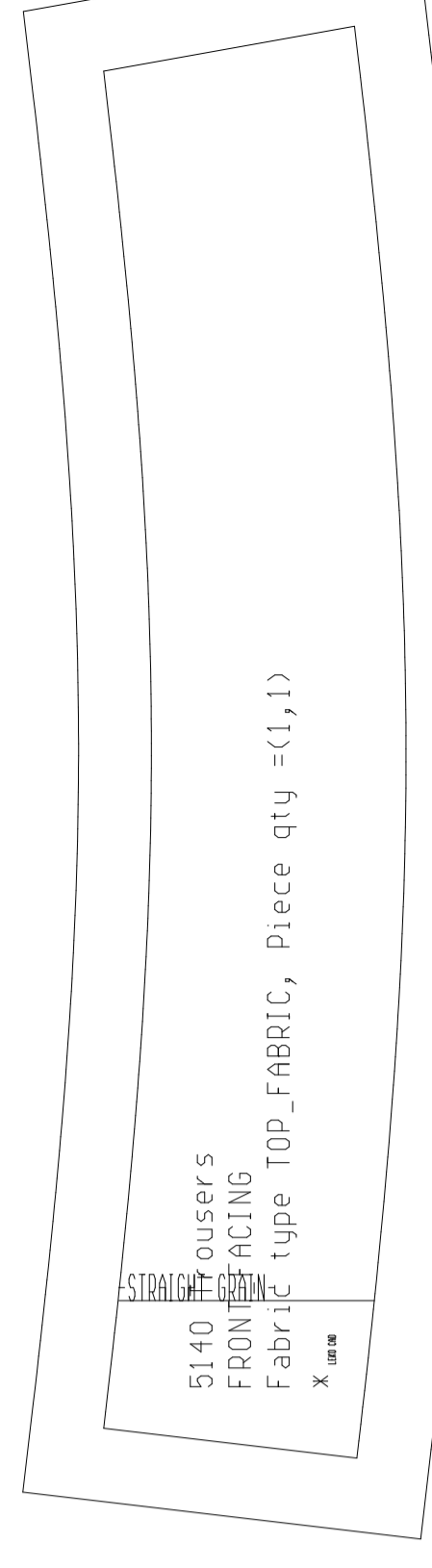
BACK_PART

Fabric type TOP_FABRIC, Piece qty=(1,1)

X 1000



5140 Trousers
FRONT_PART
Fabric type TOP_FABRIC, Piece qty=(1,0)



5140 Trousers
FRONT_PART
Fabric type TOP_FABRIC, Piece qty=(1,1)